

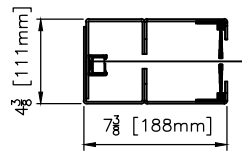
| |
|----------------------------|
| MODEL: SM1600 L_19 NO HOOD |
| CUSTOMER: - |
| ADDRESS: - |
| CITY & STATE: - |
| JOB: - |
| LOCATION: - |
| COMPANY: - |

| | | | |
|-----------------------------|----------|------|------|
| SIZE: DW= - | DH= - | | |
| MOTOR LOCATION: RIGHT | LEFT | | |
| CONTROL BOX LOCATION: RIGHT | LEFT | | |
| CONTROL BOX TYPE: 1PHASE | 3PHASE | | |
| VOLTAGE: 208V | 230-240V | 480V | 575V |

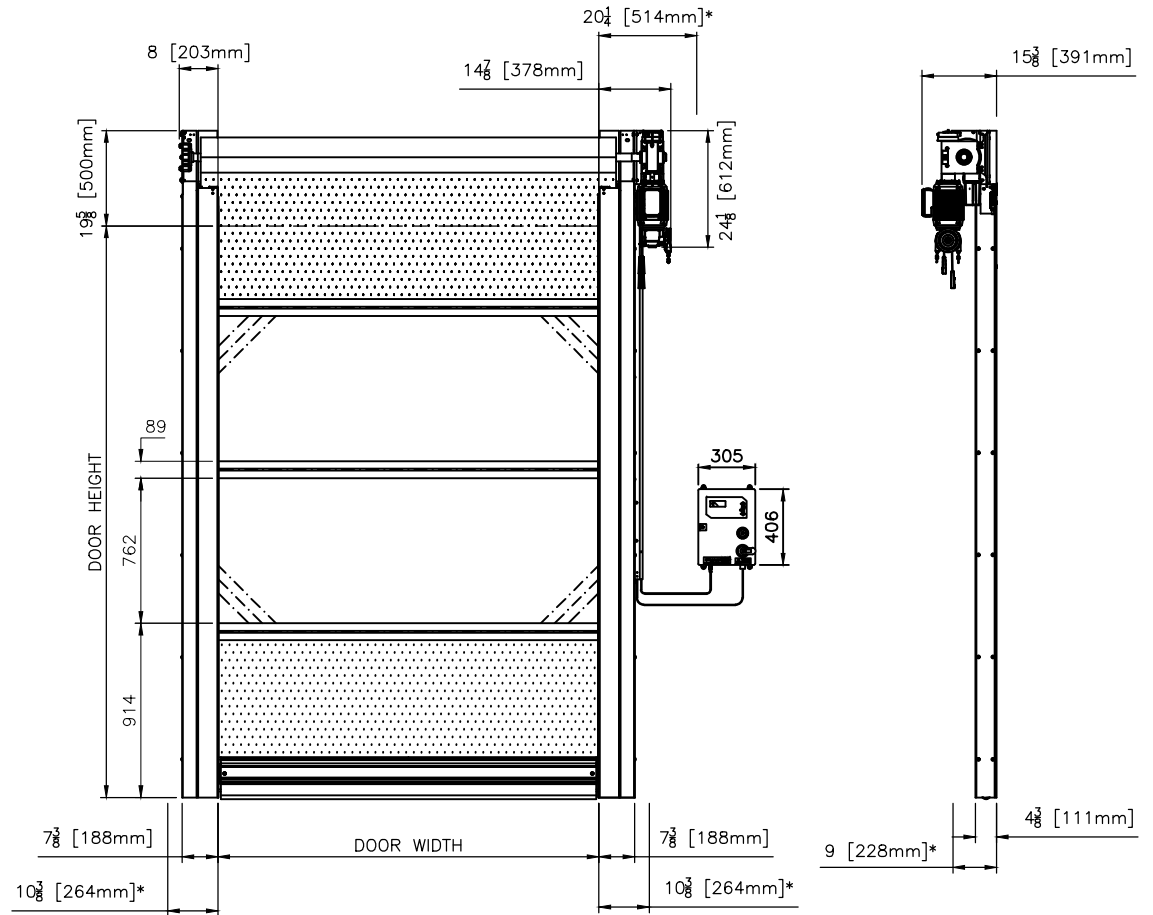
| | | |
|------------------------|--------|-------|
| PANEL COLOR: BLUE | ORANGE | BLACK |
| GREY | | |
| VISION AREA: CLEAR PVC | NONE | |

| | |
|-----------------------|---|
| OPTIONS: | |
| 1 BUTTON PUSH STATION | - |
| INDUCTION LOOP SYSTEM | - |
| RADAR MOTION SENSOR | - |

NOTES:



TRACK DETAIL
4:1



ALL DIMENSIONS ARE IN INCHES.
 * NECESSARY SPACE REQUIREMENT FOR MAINTENANCE.
 CONTROL BOX PROJECTION IS 6 INCHES.
 DRAWING SHOWN RIGHT HAND, LEFT HAND OPPOSITE.

*NOTE: GEARBOX HEATER WITH DEDICATED 110VAC
 POWER SOURCE REQUIRED FOR APPLICATIONS < 40°F

WE RESERVE THE RIGHT TO CHANGE SPECIFICATIONS WITHOUT NOTICE

| | | |
|--|---------------|-------------------|
| HORMANN | | |
| 117 STARPOINTE BOULEVARD BURGETTSTOWN, PA 15021-9506 PH: +1 (800) 365-3667 FAX: 724.385.9151 www.hormann.us | | |
| TITLE: SM1600 L_19 NO HOOD | | |
| MODEL: SM1600 L_19 | PART #: | |
| DRAWING #: | PAPER SIZE: | |
| PAGE: | SCALE: | |
| QTY: | ENGINEER: GJB | DRAWN: 12/19/2019 |