



5&2
CYCLE
WARRANTY
500,000



Steel Ranger™ 9000 L and LH High Speed Rolling Steel Doors

Ideal replacement for old fashioned rolling doors in high traffic areas



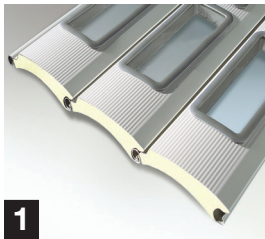
Steel Ranger™ 9000 L and LH

A 12'0" high door opens in just +/- 3.6 seconds!

Features

Application	Interior or exterior	
Model / Classification	SR 9000 L	SR 9000 LH Low Headroom
Track Configuration	Standard: Vertical - aluminum 4" w x 3" proj. Optional: Low headroom - aluminum 4" w x 3" proj.	Standard: Low headroom - aluminum 4" w x 3" proj. Optional: Vertical - aluminum 4" w x 3" proj.
Size Range	Max. width x height: 16'0" w x 14'0" h or 21'0" w x 10'8" h Min. required headroom std: 27" Min. required headroom w/hood: 32"	Max. width x height: 21'0" w x 9'0" h Min. required headroom std: 18-1/2" Min. required headroom w/hood: 21-1/4"
Operating speed	Max. opening up to 45 IPS Closing approx. 20 IPS	Max. opening up to 45 IPS Closing approx. 20 IPS
Resistance to windload	Panel in closed position. Consult factory.	
Thermal insulation	0.73 0.13	0.73 0.13
U-value (metric) in W/(m ² ·K)		
U-value (imperial) in BTU/(h·ft ² ·°F)		
Panels	Standard: 11/16" thick x 4.3" high Decotherm® 29 ga. steel slats with polyurethane core covered with triple layered skin Optional: Wet paint one or both sides of panel - Available for applications that require it Painted product not recommended and manufacturer's warranty not applicable Standard: Patented noise reduction pads on interior side	
Vision	Optional: 5.9" wide x 2.16" high double-pane polycarbonate. Window positioning: compact or full-width	
Hood	Optional: Galvanized steel	
Thru beam photoeye	Optional	
Light Grid	Standard: Built into guide tracks	
Control	NEMA 4X Smart Start™ NXT, 208 to 575 v / 3-phase Optional: Step-up and step-down transformers Optional: HFCB NEMA 3 Smart Start™ NXT with 230 v only / 1-phase	
Emergency	Chain hoist (Optional: Hand crank)	

The Steel Ranger™ 9000 L and LH are a class above traditional rolling steel doors. With direct-drive, springless operation, extremely strong panel and fast operating speeds, this revolutionary high performance rolling steel door is the model to choose as an alternative to traditional rolling steel doors in high cycle applications. Our springless design has few moving parts, which translates into low-maintenance operation. The Steel Ranger's compact footprint fits into even the most confined locations. The low headroom track design is available when applications have limited mounting space above the door opening.



1

Sleek and attractive slats **1**

Extremely strong and durable, our insulated Decotherm® 29 gauge steel panel slats (Standard color: RAL 9006) are constructed of a polyurethane core. The core is covered with a steel skin that is clad with a zinc coating, a base coating and a special, low-friction RAL 9006 top / finish coating. This special layering process makes the panel especially resistant to damage. Window positioning on the vision slats is available as compact or full-width layout.



2

Patented noise reduction pads promote quiet operation. **2**

Built-in light grid **3**

A standard, built-in light grid is integral within the low-profile, aluminum guide tracks and protects personnel and goods from contact with the door. Infrared light beams spaced every 1.75" shine across the opening, and if a beam is interrupted, the door is automatically reversed.

In addition to protecting people and goods, this system reduces the likelihood of damage to the door which saves on maintenance costs and downtime.



3



Hörmann Flexon LLC • Starpointe Business Park • 117 Starpointe Boulevard • Burgettstown, PA 15021-9506
Phone: 800.365.3667 • 724.385.9150 • Fax: 724.385.9151 • www.hormann.us • Email: info2@hormann.us

We reserve the right to change specifications without notice. ©Hörmann Flexon LLC (Issue 1.2020)