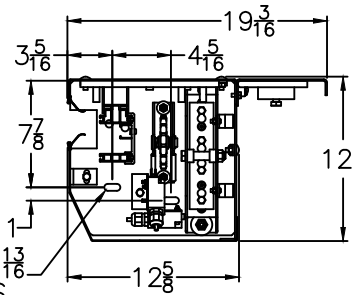
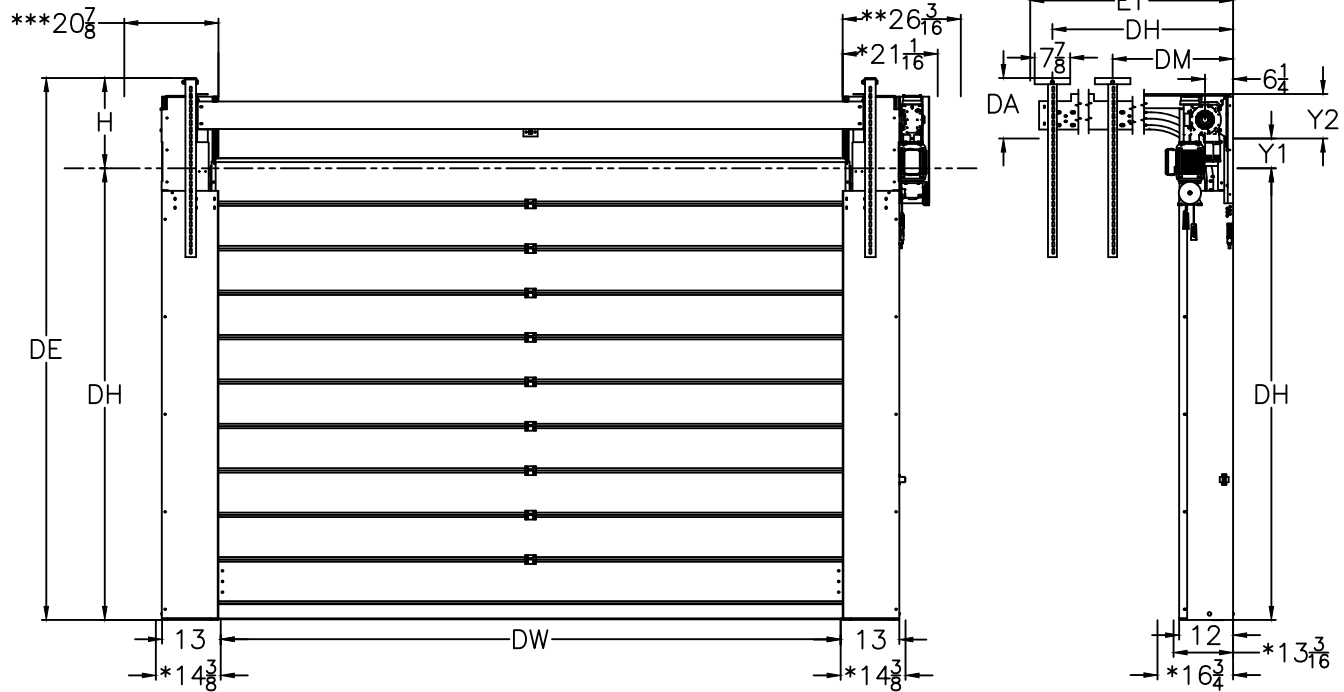


MODEL: SPEED GUARDIAN 5000U-42 LH  
 CUSTOMER: -  
 ADDRESS: -  
 CITY & STATE: -  
 JOB: -  
 LOCATION: -  
 COMPANY: -

SIZE: DW=                      DH=  
 MOTOR LOCATION:    RIGHT                      LEFT  
 CONTROL BOX LOCATION:    RIGHT                      LEFT  
 VOLTAGE: 208V                      230-240V                      360-480V  
 WIRING:    HARD WIRED                      SMART START  
 VISION AREA:  
 # OF VISION PANELS:    -                      STARTING AT    -"  
 # OF PERFORATED PANELS:    -                      STARTING AT    -"  
 OPTIONS:  
 3 BUTTON PUSH STATION                      -  
 INDUCTION LOOP                      -  
 MOTION DETECTOR                      -  
 NOTES:

| Dim | Designation           | Calculation        |
|-----|-----------------------|--------------------|
| DW  | Clear passage width   |                    |
| DH  | Clear passage height  |                    |
| DA  | Distance to ceiling   |                    |
| DM  | Ceiling anchor center |                    |
| DH  | Ceiling anchor rear   | ET - 4 3/4         |
| DE  | Ceiling height        | DH + H             |
| ET  | Distance back         | 2*DH - DE + 39 1/2 |
| H   | Headroom              | 20                 |



- DA Distance to ceiling DE-DH-S+Y2
- DE Ceiling height DA+LDH+S+Y2
- DH Rear ceiling anchor ET-4 3/4
- DM Center ceiling anchor 37 1/8 (ET>49 ↓)
- ET Minimum distance back  
2\*DH-(DH+S)+39 1/2 (MIN.49 ↓)
- DW Door width
- LH Track height DH+S-Y2 (min.DH+Y1)
- H Headroom min.21 1/8 max.29 1/2
- Y1 DH<98 7/8=6 1/8; DH≥98 7/8=8 1/8
- Y2 DH<98 7/8=12 1/4; DH≥98 7/8=10

ALL DIMENSIONS ARE IN INCHES. 1/2 X 1 13/16 2 PLS  
 \*FITTING CLEARANCE.

\*\*SPACE REQUIRED TO FIT AND DISMANTLE THE OPERATOR.  
 \*\*\*SPACE REQUIRED TO FIT AND DIMANTLE SIDE COVER  
 CONTROL BOX PROJECTION IS 6 INCHES.  
 DRAWING SHOWN RIGHT HAND, LEFT HAND OPPOSITE.

WE RESERVE THE RIGHT TO CHANGE SPECIFICATIONS WITHOUT NOTICE

|                      |                                                                                                                                                                           |                  |
|----------------------|---------------------------------------------------------------------------------------------------------------------------------------------------------------------------|------------------|
|                      | HÖRMANN FLEXON LLC<br>STARPOINTE BUSINESS PARK<br>117 STARPOINTE BOULEVARD<br>BURGETTSTOWN, PA 15021-9506<br>PH: 724.385.9150 FAX: 724.385.9151<br>www.hormann-flexon.com |                  |
|                      | TITLE: HIGH PERFORMANCE DOOR SPECIFICATIONS                                                                                                                               |                  |
| MODEL: SG5000U-42 LH | PART #:                                                                                                                                                                   | -                |
| DRAWING #:           | PAPER SIZE:                                                                                                                                                               | ANSI "B"         |
| PAGE: 1 OF 1         | SCALE:                                                                                                                                                                    | N/A              |
| QTY: -               | ENGINEER: GJB                                                                                                                                                             | DRAWN: 12/2/2016 |