

# Product Data Sheet

## Steel Ranger™ 9500 LS

Springless 'Rolling Steel-Style' Door with Insulated Curtain Panels

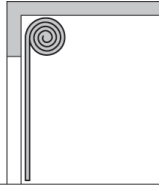


### Features



The Steel Ranger™ Low Speed, secure line of doors provide strong and durable Decotherm® insulated steel slats with an attractive surface finish.

- Superior performance and reliability with springless design and direct-drive motor.
- Decotherm® Polyurethane insulated slats for reduced energy transfer.
- 4-1/4" x 5/8" insulated slats with R-8.0 U-4.1 thermal performance.
- Exclusive foamed anti-abrasion technology considerably reduces wear and noise.
- Optional slats with double-pane Duratec® synthetic window elements.
- Push-to-operate safety equipped, standard. Integral non-contact light grid protection feature Optional.
- Efficient operation, with speeds of 8"/sec. open, 8"/sec. close.
- Contactor Type, NEMA 4 relay control box.
- Emergency operation via chain hoist.
- 5 & 2 year warranty protection plan. 5 yrs. motor/gearbox and slats. 2 yrs. other mech./elec., 500,000 cycles.

Technical Data		Remark	
<b>Steel Ranger™ 9500 LS</b> Rigid, springless rolling shutter-type door.		<b>Specify High Performance Doors in Section 08 33 30.13 'Overhead Rapid Coiling Doors'</b> Find CSI format documents available at MasterSpec®, SpecLink, and Hormann.us®	
Application		Exterior or Interior	
Speed		Opening up to 8"/sec.	Closing Up to 8"/sec.
Controller		Direct Drive Operator w/ Constant-Contact Push Button	
Roll-up Technology		Hollow-core steel roll tube with precision-welded axles	
 Springless - Rolling Shutter	Size Range	26'-0" Wide (max), up-to 11'-0" High 25'-0" Wide, up-to 14'-0" High 24'-0" Wide, up-to 15'-0" High 23'-0" Wide, up-to 16'-0" High (max)	
	Guide Track Profile	3-1/8"+ (3/4" light grid) x 3-3/8"	
	Roll Tube Diameter	6-1/4"	
	Solid Slat Profile	4-1/4" Tall x 5/8" Thick	
	Vision Slat Profile	4-1/4" Tall x 5/8" Thick	
Overall Width of Vision Area on Slat	7 Vision Portals spaced equally over 4'-8" or a varying number of Vision Portals spaced 16-1/2" o.c. over the entire width of the slat.		Min. Width = 6'-0" Min. Height = 6'-0"
Required Headroom		For openings up-to 16'-0" (max) high, HR = 21-1/2" minimum	
Drive Mechanism		Direct-drive operator, coiling roll-up	
Counterbalance System		Not required	
Braking		Control box activated 103 V DC brake	
Cycleability / Maintenance		High / inspect per ea. 50,000 cycles or 6 mo. Windows replacable independent of solid slats	
Safety Features		Constant-Contact Push Button Chain Hoist open/close	
Maximum Wind Load per Door Width		Differential Pressure, up-to = 21* psf. Windload Class = IV*, Windspeed = 91* mph	
Fire Behavior		Class E	
Warranty		5 & 2 years. Motor/gearbox and Panels (5), all other mech./elec. (2)	

# Product Data Sheet (Continued)



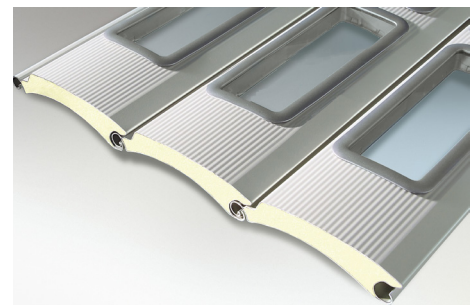
## Steel Ranger™ 9500 LS

Springless 'Rolling Steel-Style' Door with Insulated Curtain Panels

Materials and Finishes		
Guide Tracks (optional light grids mounted externally)	2 mm (avg) extruded aluminum	--
Door Header, Roll Tube, Bearing Brackets	10-ga. Hot-dipped galvanized steel	Zinc, Class G90
Weather Seals	Vinyl brush lintel	Optional vinyl brush at side frames
Door Slats with Window Elements	DecoTherm® 0.34 mm Hot-dipped galvanized steel, with foamed-in-place polyurethane insulation core. MicroGrain™ texture. Color RAL 9006. Window Polycarbonate, Clear w. Duratec® coating	Zinc, Class G40 (0.4 oz. per SF) Polyurethane foam density 2.0 pcf (33 kg/m³)
Solid Door Slats	DecoTherm® 0.34 mm Hot-dipped galvanized steel, with foamed-in-place polyurethane insulation core. MicroGrain™ texture. Color RAL 9006	Zinc, Class G40 (0.4 oz. per SF) Polyurethane foam density 2.0 pcf (33 kg/m³)
Door Slats with Ventilation Elements	DecoTherm® 0.34 mm Hot-dipped galvanized steel, with foamed-in-place polyurethane insulation core. MicroGrain™ texture. Color RAL 9006. Slotted Portal Black ABS	Open area per Portal = 4.18 Square Inches Zinc, Class G40 (0.4 oz. per SF) Polyurethane foam density 2.0 pcf (33 kg/m³)
Electric Door Operator	Cast aluminum	--
Control Panel	Baked-on polyester powder coat painted. Color RAL 7003 Moss Grey	NEMA Type 4 relay control box
Hood and Motor Cover	20-ga. Hot-dipped galvanized steel	Zinc, Class G90 (0.9 oz. per SF)
Energy Analysis		
Air Permeability	Class 0	Per EN 12426, ASTM E283 (Without Visions)
Water Tightness	Class 0	Per EN 12425 (Without Visions)
Visible Transmittance (Tvis)	0.86%	Window elements only
Solar Heat Gain Coefficient (SHGC)	0.83%	Window elements only
Thermal Resistance (R-value) Slat only	8.0 (ft² x °F x hr)/BTU or 1.41 (m² x K)/W	Calc. per DASMA TDS 163 (Without Visions)
Heat Transfer Coefficient (U-value) Assembly	4.1 W/(m² x K) or 0.72 BTU/(hr x ft² x °F)	Test per EN 12428 (Without Visions)
Acoustic Insulation	R <sub>w</sub> 18 dB (STC 21 dB)	Per EN ISO 717-7 (Without Visions)
LEED Credit	MRc2, MRc4, EQc5	USGBC® LEED v4
Electrical		
Electric Door Operator (Motor)	2.0 HP GfA Elektromaten	NEMA Type 3 / IP54
Operating Voltage (Motor)	3 PH, 230v or 460v	From Control Box to Motor
Control Box	6, 10A (230v) or 12, 20A (460v) relay control panel.	Enclosure: NEMA Type 4X / IP66, UL/CUL Listed
Standard Power Requirement (to Control Box)	208vAC - 575vAC, 3 PH, 60 Hz	Transformer req. at 208v, 575v (not included)
Full Load Amps	11.5 A (230v), 5.7 A (460v)	Operator
Disconnect	Fuse: 20 Amp (230v), 10 Amp (460v), Class K	Supplied by Others

The Steel Ranger™ 9500 LS is a class above traditional rolling steel doors. With a windload rating up to 91 mph, a direct-drive motor/operator, and springless compact tracks, extremely strong panel and reliable operation, this revolutionary high performance coiling steel door is the model to choose as an upgrade to traditional steel doors in high cycle applications.

Our springless design has few moving parts, which translates into maintenance free operation. DecoTherm® steel panels are strong and durable, with a special layered finish that can perform in tough environments and resist damage. Constant contact push button activation is a standard feature for our low speed door.



Find us in  
**MasterSpec**  
a product of The American Institute of Architects

Our products are specified in  
**BSD SpecLink**  
www.bsdspeclink.com

**HÖRMANN**  
High • Performance • Doors  
The best specify Hörmann

The Steel Ranger™ Low Speed, secure line of doors provide excellent durability and reliable operation.



Hörmann Flexon, LLC | Starpointe Business Park | 117 Starpointe Boulevard | Burgettstown, PA 15021-9506  
1-800-365-3667 | 724-385-9150 | Fax: 724-385-9151 | www.hormann.us | Email: sales2@hormann.us