

# Product Data Sheet

Steel Ranger™ 9500 LS



## Features



The Steel Ranger™ Low Speed, secure line of doors provide strong and durable Decotherm® insulated steel slats with an attractive surface finish.

- Durable, low-profile extruded aluminum guide tracks.
- Decotherm® Polyurethane insulated slats for reduced heat transfer and optimal energy performance.
- ¾" thick X 4-¼" high insulated slats with R-8, U-0.13 thermal performance.
- Exclusive foamed anti-abrasion technology reduces wear and noise considerably.
- Available optional slats with double-pane polycarbonate synthetic vision portals.
- Push-to-operate safety equipped, standard. Integral non-contact light grid protection feature Optional.
- Efficient operation, with speeds up to 8"/sec. open, 8"/sec. close.
- Contactor Type, NEMA 4 relay control box.
- Emergency operation via chain hoist.
- 5 & 2 year warranty protection plan. 5 yrs. motor/gearbox and slats. 2 yrs. other mech./elec., 500,000 cycles.

Technical Data		Remark	
<b>Steel Ranger™ 9500 LS</b> Rigid panel; high performance overhead coiling door.			
Application		Exterior* or Interior	
Speed		Opening up to 8"/sec.	Closing Up to 8"/sec.
Controller		Direct Drive Operator w/ Constant-Contact Push Button	
Roll-up Technology		Hollow-core steel roll tube with precision-welded axles	
 Overhead Coiling	Size Range	26'-0" Wide (max), up-to 11'-0" High 25'-0" Wide, up-to 14'-0" High 24'-0" Wide, up-to 15'-0" High 23'-0" Wide, up-to 16'-0" High (max)	
	Guide Track Profile	3-⅛" + (¾" light grid) x 3-⅜"	
	Roll Tube Diameter	6-¼"	
	Solid Slat Height & Depth	4-¼"H, ¾"D	
	Vision Slat Height	4-¼"	
Overall Width of Vision Area on Slat	7 Vision Portals spaced equally over 4'-8" or a varying number of Vision Portals spaced 16-½" o.c. over the entire width of the slat.		Min. W = 6'-0" Min. H = 6'-0"
Required Headroom	For openings up-to 16'-0" (max) high, HR = 21-½" minimum		With Hood Enclosure HR = 23-½"
Drive Mechanism	Direct-drive operator, coiling roll-up		--
Counterbalance System	Not required		--
Braking	Control box activated 103 V DC brake		--
Cycleability / Maintenance	High / inspect per ea. 50,000 cycles or 6 mo. Windows replacable independent of solid slats		Consult factory for details
Safety Features	Constant-Contact Push Button Chain Hoist open/close		Optional Light Grid, Photoeye, Reversing Edge
Resistance to Wind Load	Differential Pressure, up-to = 21* psf. Windload Class = IV*, Windspeed = 90* mph		*Door Width = 24ft. w/ high windload requested. Per standard EN 12424, DASMA 108 Exposure B
Fire Resistance Rating	Non-rated, Non-conforming exit		Per 2012 IBC Section 1008
Warranty	5 & 2 years. Motor/gearbox and Panels (5), all other mech./elec. (2)		Standard

# Product Data Sheet (Continued)

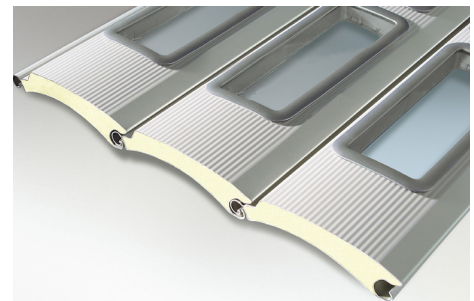
Steel Ranger™ 9500 LS



Materials and Finishes		
Guide Tracks (light grid mounted externally)	2.25mm extruded anodized aluminum	--
Door Header, Roll Tube, Bearing Brackets	7-ga. Hot-dipped galvanized steel	Zinc, Class G90
Counterbalance Assemblies	Not required	--
Weather Seals	Twin rubber at guides, vinyl brush at lintel	--
Vision Door Slats	DecoTherm® 29-ga. Hot-dipped galvanized steel, with foamed-in-place polyurethane insulation core. MicroGrain™ texture. Color RAL 9006. Window Portal PVC Clear w. Duratec® coating	Zinc, Class G40 (0.4 oz. per SF) Polyurethane foam density 11pcf
Solid Door Slats	DecoTherm® 29-ga. Hot-dipped galvanized steel, with foamed-in-place polyurethane insulation core. MicroGrain™ texture. Color RAL 9006	Zinc, Class G40 (0.4 oz. per SF) Polyurethane foam density 11pcf
Ventilation Door Slats	DecoTherm® 29-ga. Hot-dipped galvanized steel, with foamed-in-place polyurethane insulation core. MicroGrain™ texture. Color RAL 9006. Slotted Portal Black PVC	Open area per Portal = 4.18 Square Inches
Electric Door Operator	Cast aluminum	--
Control Panel	Baked-on polyester powder coat painted. Color RAL 7003 Moss Grey	NEMA 4 relay control box
Hood and Motor Cover	16-ga. Hot-dipped galvanized steel	Zinc, Class G90 (0.9 oz. per SF)
Energy Analysis		
Air Permeability	1.02 m <sup>3</sup> /(m <sup>2</sup> x h), Class 2	Per test EN 12427, ASTM E283
Resistance to Water Penetration	Class 2	Per test EN 12489
Visible Transmittance (Tvis)	0.91%	Clear vision slats
Solar Heat Gain Coefficient (SHGC)	0.75%	Clear vision slats
Thermal Resistance (R-value)	R 8.0	Per test EN 717-1 (Without Visions)
Heat Transfer Coefficient (U-value)	U 0.73 W/(m <sup>2</sup> K), U 0.13 BTU/(h*ft <sup>2</sup> *F)	Per test EN 12667: 199997-11
Acoustic Insulation	STC 30, R <sub>w</sub> 26 dB	Per test EN 717-2 (Without Visions)
LEED Credit	MRc2, MRc4, EQc5	USGBC® LEED v4
Electrical		
Electric Door Operator (Motor)	2.0 HP GfA Elektromaten	NEMA 3 rated
Operating Voltage	3 PH, 230v or 460v	--
Control Box	6, 10A (230v) or 12, 20A (460v) relay control panel.	NEMA 4, UL/CUL Listed
Standard Power Requirement	230vAC - 460vAC, 3 PH, 60 Hz	--
Full Load Amps	11.5 A (230v), 5.7 A (460v)	--
Disconnect	Fuse: 20 Amp (230v), 10 Amp (460v), Class K	--

The Steel Ranger™ 9500 LS is a class above traditional rolling steel doors. With a windload rating up to 90 mph, a direct-drive motor/operator, and springless compact tracks, extremely strong panel and reliable operation, this revolutionary high performance coiling steel door is the model to choose as an upgrade to traditional steel doors in high cycle applications.

Our springless design has few moving parts, which translates into maintenance free operation. DecoTherm® steel panels are strong and durable, with a special layered finish that can perform in tough environments and resist damage. Constant contact push button activation is a standard feature for our low speed door.



The Steel Ranger™ Low Speed, secure line of doors provide excellent durability and reliable operation.

Hörmann Flexon, LLC | Starpointe Business Park | 117 Starpointe Boulevard | Burgettstown, PA 15021-9506  
Phone: 800-365-3667 | 724-385-9150 | Fax: 724-385-9151 | www.hormann.us | Email: sales2@hormann.us