

Product Data Sheet

Steel Ranger™ 9000 L

High-Performance 'Rolling Steel-Style' Door with Insulated Curtain Panels

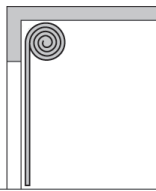


Features



The Steel Ranger™ High speed, secure line of doors provide strong and durable DecoTherm® insulated steel slats with an attractive surface finish.

- Superior performance and reliability over traditional class rolling steel products with springless design.
- DecoTherm® Polyurethane insulated slats for reduced energy transfer.
- Fast operation, with speeds up to 45"/sec. open, 30"/sec. close.
- Exclusive foamed anti-abrasion technology considerably reduces wear and noise.
- Compact and durable extruded aluminum guide tracks.
- Integral non-contact light grid entrapment protection feature.
- Emergency operation via chain hoist.
- 4-1/4" x 5/8" insulated slats with R-8.0 U-4.1 thermal performance.
- Optional slats with double-pane Duratec® synthetic window elements.
- 5 & 2 year warranty protection plan. 5 yrs. motor/gearbox and slats. 2 yrs. other mech./elec., 500,000 cycles.

Technical Data		Remark	
Steel Ranger™ 9000 L Rigid, high performance rolling shutter-type door.		Specify High Performance Doors in Section 08 33 30.13 'Overhead Rapid Coiling Doors' Find CSI format documents available at MasterSpec®, SpecLink, and Hormann.us®	
Application		Exterior or Interior	
Speed		Opening up to 45"/sec.	Closing Up to 30"/sec.
Control Box		Smart Start™ NXT (11-5/8"W x 15-3/4"H x 8-1/2"D)	
Roll-up Technology		Hollow-core steel roll tube with precision-welded axles	
 <p>High Speed - Rolling Shutter</p>	Door Construction	Width = 21'-4" (max), avail. up-to 10'-8" High Width = 20'-7", avail. up-to 11'-6" High Width = 18'-11", avail. up-to 12'-4" High Width = 18'-1", avail. up-to 13'-2" High Width = 16'-5" & below, avail. up-to 14'-0" (max) High	
	Size Range	Min. Width = 3'-5" Min. Height = 5'-0"	
	Guide Track Profile	3-5/8" + (3/4" light grid) x 2-3/4"	
	Roll Tube Diameter	6-1/4"	
	Solid Slat Profile	4-1/4" Tall x 5/8" Thick	
	Vision Slat Profile	4-1/4" Tall x 5/8" Thick	
Overall Width of Vision Area on Slat	Either 7 portals, spaced at 8-1/4" on center apart, or varying number of portals spaced at 16-1/2" on center up-to within 2" of the ends of the slat.		
Required Headroom		HR = 24-1/2" minimum	
Drive Mechanism		Direct-drive operator	
Counterbalance System		Not required	
Braking		Control box activated 24V DC brake	
Cycleability / Maintenance		High Cycleability, inspect at 6 mo. intervals. Windows replacable independent of solid slats.	
Safety Features		Built-in light grid, chain hoist open/close	
Maximum Wind Load per Door Width		Up-to 21'-4", Wind Load Class 2 (9.4 psf or 60 mph) Up-to 18'-11", Wind Load Class 3 (14.5 psf or 75 mph) Up-to 15'-7", Wind Load Class 4 (21 psf or 91 mph)	
Fire Behavior		Class E	
Manufacturer Warranty		5 & 2 years. Motor/gearbox and Panels (5), all other mech./elec. (2)	

Product Data Sheet (Continued)



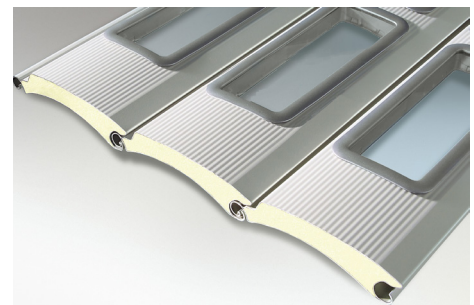
Steel Ranger™ 9000 L

High-Performance 'Rolling Steel-Style' Door with Insulated Curtain Panels

Materials and Finishes		Remark
Guide Tracks (light grid mounted externally)	2 mm (avg) extruded aluminum	--
Door Header, Roll Tube, Bearing Brackets	10-ga. Hot-dipped galvanized steel	Zinc, Class G90
Weather Seals	Vinyl brush lintel	Optional vinyl brush at side frames
Door Slats with Window Elements	DecoTherm® 0.34 mm Hot-dipped galvanized steel, with foamed-in-place polyurethane insulation core. MicroGrain™ texture. Color RAL 9006. Window Polycarbonate, Clear w. Duratec® coating	Zinc, Class G40 (0.4 oz. per SF) Polyurethane foam density 2.0 pcf (33 kg/m³)
Solid Door Slats	DecoTherm® 0.34 mm Hot-dipped galvanized steel, with foamed-in-place polyurethane insulation core. MicroGrain™ texture. Color RAL 9006	Zinc, Class G40 (0.4 oz. per SF) Polyurethane foam density 2.0 pcf (33 kg/m³)
Door Slats with Ventilation Elements	DecoTherm® 0.34 mm Hot-dipped galvanized steel, with foamed-in-place polyurethane insulation core. MicroGrain™ texture. Color RAL 9006. Slotted Portal Black ABS	Open area per Portal = 4.18 Square Inches Zinc, Class G40 (0.4 oz. per SF) Polyurethane foam density 2.0 pcf (33 kg/m³)
Electric Door Operator	Cast aluminum	--
Control Panel	Stainless steel, or baked-on polyester powder coat painted. Color RAL 7035 Light Gray	--
Hood and Motor Cover	20-ga. Hot-dipped galvanized steel	Zinc, Class G90 (0.9 oz. per SF)
Energy Analysis		
Air Permeability	Class 0	Per EN 12426, ASTM E283 (Without Visions)
Water Tightness	Class 0	Per EN 12425 (Without Visions)
Visible Transmittance (Tvis)	0.86%	Window elements only
Solar Heat Gain Coefficient (SHGC)	0.83%	Window elements only
Thermal Resistance (R-value) Slat only	8.0 (ft² x°F x hr)/BTU or 1.41 (m² x K)/W	Calc. per DASMA TDS 163 (Without Visions)
Heat Transfer Coefficient (U-value) Assembly	4.1 W/(m² x K) or 0.72 BTU/(hr x ft² x°F)	Test per EN 12428 (Without Visions)
Acoustic Insulation	R _w 18 dB (STC 21 dB)	Per EN ISO 717-7 (Without Visions)
LEED Credit	MRc2, MRc4, EQc5	USGBC® LEED v4
Electrical		
Electric Door Operator (Motor)	2.0 HP GfA Elektromaten F18	NEMA Type 3 / IP54
Operating Voltage (Motor)	3 PH, 132v or 230v	From Control Box to Motor
Control Box	5 KW variable frequency drive rated for operating voltage	Enclosure: NEMA Type 4X / IP66, UL/CUL Listed
Standard Power Requirement (to Control Box)	230 vAC, 1 PH or 208vAC* - 480 vAC - 600vAC*, 3 PH, 60 Hz	*Transformer may be req'd. Consult factory
Full Load Amps	13.3 A	Operator
Disconnect	Fuse: 20 Amp, Class K	Supplied by Others

The Steel Ranger™ 9000 L is a class above traditional rolling steel doors. With a windload rating up to 91 mph, a direct-drive motor/operator, and springless compact tracks, extremely strong panel and fast operating speeds, this revolutionary high performance coiling steel door is the model to choose as an upgrade to traditional steel doors in high cycle applications.

Our springless design has few moving parts, which translates into maintenance free operation. DecoTherm® steel panels are strong and durable, with a special layered finish that can perform in tough environments and resist damage. The inline light grid is a standard feature for our low profile tracks.



The Steel Ranger™ High speed, secure, excellent durability and fast opening speeds.

Find us in
MasterSpec
a product of The American Institute of Architects

Our products are specified in
SpecLink
www.bsdspeclink.com



Hörmann Flexon, LLC | Starpointe Business Park | 117 Starpointe Boulevard | Burgettstown, PA 15021-9506
 1-800-365-3667 | 724-385-9150 | Fax: 724-385-9151 | www.hormann.us | Email: info2@hormann.us