

# Product Data Sheet

## Steel Ranger™ 9000 L

High-Performance 'Rolling Steel-Style' Door with Insulated Curtain Panels

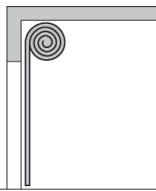


### Features



The Steel Ranger™ High speed, security line of doors provide strong and durable Decotherm® insulated steel slats with an attractive surface finish.

- Smart Start™ NXT, NEMA 4X programmable control box.
- Decotherm® Polyurethane insulated slats for reduced heat transfer and optimal energy efficiency.
- Fast and efficient operation, with speeds up to 45"/sec. open, 30"/sec. close.
- Exclusive foamed anti-abrasion technology reduces wear and noise considerably.
- Durable extruded aluminum guide tracks.
- Integral non-contact light grid protection feature.
- Emergency operation via chain hoist.
- 1" thick X 4-1/4" high insulated slats with R-8, U-0.125 thermal performance.
- Optional slats with double-pane Duratec® synthetic vision portals.
- 5 & 2 year warranty protection plan. 5 yrs. motor/gearbox and slats. 2 yrs. other mech./elec., 500,000 cycles.

Technical Data		Remark			
<b>Steel Ranger™ 9000 L</b> Rigid, high performance overhead rapid coiling door.					
Application	Exterior* or Interior		* Exterior/exterior mounted doors not available		
Speed	Opening up to 45"/sec.	Closing Up to 30"/sec.	Variable speed based on opening height		
Control Box	Smart Start™ NXT (11-5/8"W x 15-3/4"H x 8-1/2"D)		Standard, NEMA 4X rated		
Roll-up Technology	Hollow-core steel roll tube with precision-welded axles		Standard		
 Overhead Coiling	Door Construction	Width = 21'-0" (max) to 19'-0", avail. up-to 11'-0" High Width = 18'-0", avail. up-to 12'-0" High Width = 17'-0", avail. up-to 13'-0" High Width = 16'-0" & below, avail. up-to 14'-0" (max) High	Min. W = 3'-5" Min. H = 5'-0"		
	Size Range				
	Guide Track Profile			3-5/8"+ (3/4" light grid) x 2-3/4"	C-T Profile Shape (W x D)
	Roll Tube Diameter			6-1/4"	Hollow core
	Solid Slat Height & Depth			4-1/4"H, 5/8"D	Concentric profile
Vision Slat Height	4-1/4"	--			
Overall Width of Vision Area on Slat	Either 7 portals, spaced at 8-1/4" on center apart, or varying number of portals spaced at 16-1/2" on center up-to within 2" of the ends of the slat.		Portal size 6-1/4" x 2-7/8" Grouping is centered on width of the slat		
Required Headroom	HR = 26" minimum		With Hood Enclosure HR = 34"		
Drive Mechanism	Direct-drive operator with chain lift mechanism		--		
Counterbalance System	Not required		--		
Braking	Control box activated 24V DC brake		--		
Cycleability / Maintenance	High / inspect per ea. 50,000 cycles or 6 mo. Windows replacable independent of solid slats		Consult factory for details		
Safety Features	Built-in light grid, chain hoist open/close		Spring compensation assist		
Resistance to Wind Load	DW ≤ 21'-0", Class 3 max. 88mph (20 psf)		DW = Door Width Per standard EN 12424, DASMA 108 Exposure B		
Fire Resistance Rating	Non-rated, Non-conforming exit		Per 2012 IBC Section 1008		
Warranty	5 & 2 years. Motor/gearbox and Panels (5), all other mech./elec. (2)		Standard		

# Product Data Sheet (Continued)



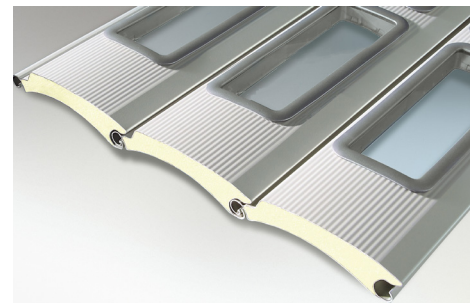
## Steel Ranger™ 9000 L

High-Performance 'Rolling Steel-Style' Door with Insulated Curtain Panels

Materials and Finishes		
Guide Tracks (light grid mounted externally)	13-ga. extruded anodized aluminum	--
Door Header, Roll Tube, Bearing Brackets	7-ga. Hot-dipped galvanized steel	Zinc, Class G90
Counterbalance Assemblies	Not required	--
Weather Seals	Twin rubber, non-contact lintel	--
Vision Door Slats	DecoTherm® 29-ga. Hot-dipped galvanized steel, with foamed-in-place polyurethane insulation core. MicroGrain™ texture. Color RAL 9006. Window Portal PVC Clear w. Duratec® coating	Zinc, Class G40 (0.4 oz. per SF) Polyurethane foam density 11pcf
Solid Door Slats	DecoTherm® 29-ga. Hot-dipped galvanized steel, with foamed-in-place polyurethane insulation core. MicroGrain™ texture. Color RAL 9006	Zinc, Class G40 (0.4 oz. per SF) Polyurethane foam density 11pcf
Ventilation Door Slats	DecoTherm® 29-ga. Hot-dipped galvanized steel, with foamed-in-place polyurethane insulation core. MicroGrain™ texture. Color RAL 9006. Slotted Portal Black PVC	Open area per Portal = 4.18 Square Inches
Electric Door Operator	Cast aluminum	--
Control Panel	Stainless steel, or baked-on polyester powder coat painted. Color RAL 7035 Light Gray	--
Hood and Motor Cover	16-ga. Hot-dipped galvanized steel	Zinc, Class G90 (0.9 oz. per SF)
Energy Analysis		
Air Permeability	1.02 m <sup>3</sup> /(m <sup>2</sup> x h), Class 2	Per test EN 12427, ASTM E283
Resistance to Water Penetration	Class 2	Per test EN 12489
Visible Transmittance (Tvis)	0.91%	Clear vision slats
Solar Heat Gain Coefficient (SHGC)	0.75%	Clear vision slats
Thermal Resistance (R-value)	R 8.0	Per test EN 717-1 (Without Visions)
Heat Transfer Coefficient (U-value)	U 0.125	Per test EN 12667: 199997-11
Acoustic Insulation	STC 30, R <sub>w</sub> 26 dB	Per test EN 717-2 (Without Visions)
LEED Credit	MRc2, MRc4, EQc5	USGBC® LEED v4
Electrical		
Electric Door Operator (Motor)	2.0 HP GfA Elektromaten F18	NEMA 3 rated
Operating Voltage	3 PH, 132v or 230v	--
Control Box	5 KW variable frequency drive rated for operating voltage	NEMA 4X, UL/CUL Listed
Standard Power Requirement	208vAC - 600vAC, 3 PH, 60 Hz	--
Full Load Amps	20 A	--
Disconnect	Fuse: 20 Amp, Class K	--

The Steel Ranger™ 9000 L is a class above traditional rolling steel doors. With a windload rating up to 88 mph, a direct-drive motor/operator, and springless compact tracks, extremely strong panel and fast operating speeds, this revolutionary high performance coiling steel door is the model to choose as an upgrade to traditional steel doors in high cycle applications.

Our springless design has few moving parts, which translates into maintenance free operation. DecoTherm® steel panels are strong and durable, with a special layered finish that can perform in tough environments and resist damage. The inline light grid is a standard feature for our low profile tracks.



The Steel Ranger™ High speed, security line of doors provide excellent durability and fast opening speeds.

Hörmann Flexon, LLC | Starpointe Business Park | 117 Starpointe Boulevard | Burgettstown, PA 15021-9506  
Phone: 800-365-3667 | 724-385-9150 | Fax: 724-385-9151 | www.hormann.us | Email: sales2@hormann.us