

Product Data Sheet

Speed-Commander™ 1400 SEL¹⁹
SoftEdge Light Curtain 2019



Features



The Speed-Commander™ 1400 SEL¹⁹ high speed flexible door delivers excellent speed with safe & reliable operation, suitable for interior applications.

- Smart Start™ NXT, NEMA 4X programmable control box available with 304 stainless steel enclosure.
- Speed: Up to 80"/sec. open, 30"/sec. close.
- Patented, self-repairing design, able to re-align displaced panels into guide tracks.
- Features non-contact light grid protection.
- Tough, 2-ply reinforced puncture resistant Commander™ fabric curtain panels.
- 1 Standard full-width clear PVC vision area.
- Panel Color: White, Yellow, Orange, Red, Blue, Gray.
- Curtain reinforced with full-length aluminum panel connectors, or light-weight spring steel wind bars (optional).
- Best-in-class 5 & 2 year warranty. 5 years motor & curtain. 2 years all other mech/electrical components.

Technical Data		Remark	
Speed-Commander™ 1400 SEL¹⁹ Flexible, high performance overhead rapid coiling door with versatility for a wide range of applications.		Specify High Performance Doors in Section 08 33 30.13 'Overhead Rapid Coiling Doors' Find CSI format documents available at MasterSpec®, SpecLink, and Hormann.us®	
Application		Interior	
Speed		Opening Up to 80"/sec.	Closing Up to 30"/sec.
Control Box		Smart Start™ NXT (11 5/8" W x 15 3/4" H x 8 1/2" D)	
Roll-up Technology		Hollow-core steel roll tube with precision-welded axles	
 Overhead Coiling	Door Construction	Standard	
	Size Range	Min. 4'-0" up-to 14'-0" wide Min. 4'-0" up-to 16'-0" high	
	Guide Track Profile	6" x 3 1/2"	
	Roll Tube Diameter	6 1/4"	
	Vision Panel(s) Height	36" High, 0.08" Thick	
Required Headroom	17 1/4" min.		
Drive Mechanism		Direct-drive operator keyed to Roll Tube	
Counterbalance System		Not Required	
Braking		Control box activated 24V DC brake	
Cycleability / Maintenance		High Cycleability Inspect at 6 mo. intervals	
Safety Features		Integrated in-line light grid, hand crank open/close	
Resistance to Wind Load		Up to 1.60 psf; Wind Load Class 0; 25 mph	
Fire Resistance Rating		Non-rated, Non-conforming exit	
Warranty		5 & 2 years. Motor/gearbox and Panels (5), all other mech./elec. (2)	
Materials and Finishes			
Guide Tracks & Covers		12-ga. HDG steel tracks	
Door Header Assembly, Roll Tube		5 mm Hot-dipped galvanized steel	
Weather Seals		Dual black rubber jamb seals. Nylon brush lintel seal.	
Panel Connectors		Clear Anodized Extruded Aluminum Profiles	
Solid Door Panels: (Standard)	58 Oz. Fabric with Aluminum Panel Connectors	Abrasion resistant, 2-ply poly-reinforced "Commander™" PVC sheet, 1.4 mm Thick, 58 oz./yd ²	
		Color Availability: White, Yellow, Orange, Red, Blue, Gray, (58 oz./yd ²)	

Product Data Sheet (Continued)

Speed-Commander™ 1400 SEL¹⁹
SoftEdge Light Curtain 2019



Materials and Finishes (Continued)			Remark
Vision Door Panels: (Standard)	Full-Width Continuous	Abrasion resistant, transparent PVC sheet, 2.0 mm Thick	Color Availability: Clear
Ventilation Door Panel: (Optional)	Full-Width Continuous Removable Screen Panel	Vinyl coated 1000 density polyester core yarn in warp and fill. 0.6 mm Thick, 10.4 oz./yd ²	Ventilation panel frame, extruded anod. aluminum Fabric Openness 46.9%
Bottom Bar		Soft Edge Bottom Bar with spring steel reinforcing	Optional Clear Anodized Extruded Aluminum available.
Electric Door Operator		Cast aluminum	Stainless Steel optional
Control Panel		Standard: Baked-on polyester powder coat paint. Color RAL 7035 Light Gray	304 Stainless Steel optional
Hood and Motor Cover (optional)		14-ga. Hot-dipped galvanized steel	Zinc, Class G90 (16-ga. 304 Stainless Steel optional)
Energy Analysis			
Visible Transmittance (Tvis)		0.80%	Per calc ANSI/NFRC 200-2014 (Clear Vision Panels)
Acoustic Insulation		STC 35, R _w 35 dB	Per test EN 717-2, ASTM E90
LEED Credit		EAc2, MRc1, MRc3, IEQc2, IEQc4, INc1, RPc1	USGBC® LEED v4
Electrical			
Electric Door Operator (Motor)		2.0 HP GfA Elektromaten F15	NEMA Type 3 / IP54
Operating Voltage (Motor)		132vAC, 3 PH	From Control Box to Motor
Control Box		5 KW variable frequency drive rated for operating voltage	NEMA Type 4X / IP66, UL/CUL Listed
Standard Power Requirement (to Control Box)		230 vAC, 1 PH or 208vAC* - 575 vAC*, 3 PH, 60 Hz	*Transformer may be req. at voltage limits
Full Load Amps		13.3 A	Operator
Disconnect		Fuse: 20 Amp, Class K	Service to Control Box. Supplied by Others

State-of-the-Art Integrated Safety

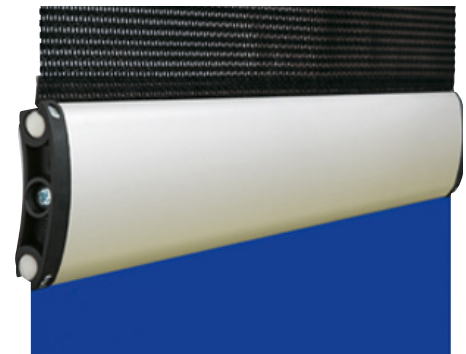
Speed-Commander™ 1400 SEL¹⁹ High-Performance doors are ideal for protecting the safety of facility occupants and goods. It's standard 8'-0" high light grid provides a reliable layer of protection at the doorway, helping to manage risk while keeping your business moving.

Compact Design

Heavy-duty, low-profile side frames of just 6" wide x 3 1/2" projection enable the 1400 SEL¹⁹ to fit easily into compact areas. Innovative SoftEdge gate technology avoids damage to the door while the patented self-repairing curtain design is able to re-align displaced panels into guide tracks eliminating downtime.

304 Grade Stainless Steel Options for the Highest Demands

The Speed-Commander™ 1400 SEL¹⁹ Food-Master offers freedom of configuration to meet the exact options you require, without risk of unnecessary costs. Stainless steel optional components include the Roll Tube, Hood and Motor Enclosure, Jamb Guide Tracks, and all Hardware.



Speed-Commander™ 1400 SEL¹⁹ Aluminum Panel Connector shown with Solid Panel (Bottom) and Ventilation Panel (Top)



Speed-Commander™ 1400 SEL¹⁹ High-Performance flexible doors use state-of-the-art Light Curtain entrapment protection features.

Find us in **MasterSpec**®
a product of The American Institute of Architects

Our products are specified in **SpecLink**
www.bsdspeclink.com



Hörmann Flexon, LLC | Starpointe Business Park | 117 Starpointe Boulevard | Burgettstown, PA 15021-9506
1-800-365-3667 | 724-385-9150 | Fax: 724-385-9151 | www.hormann.us | Email: info2@hormann.us